

Celebrating 10 years
of connecting children with
nature through birding

Birds in My Neighborhood[®] soars to new heights

The Openlands Birds in My Neighborhood[®] program celebrated 10 years of connecting kids with nature where they live, learn, and play. Launched in 2013, the program is a volunteer-driven program serving Pre-K through 5th grade classes around the Chicago region, prioritizing schools in Chicago's South and West Sides. Openlands believes birding can be an engaging entry for children to connect with the outdoors and foster a lifelong passion for the environment.

Openlands board member, **Wendy Paulson**, first brought the idea for this program to Openlands after working on a similar program in New York City schools. "What's been wonderful about Openlands is that the organization already had established relationships with schools in Chicago through Building School Gardens," she said. Teachers already saw the benefits of incorporating garden and nature-based education and welcomed Birds in My Neighborhood.

Volunteers have always been at the core of this program. Every spring, they work with teachers on one classroom session, one neighborhood walk, and one field trip to a local natural area. Each kid receives a checklist and a birding journal to keep track of what they've learned. Openlands offers volunteer training sessions to upskill volunteers in bird identification and working with children. All volunteers are vetted and go through a background check to ensure the safety of students.

As a former classroom educator, Wendy shaped this program around inquiry-based learning and three foundational questions: What do you already know about birds? What birds do you know? What do you want to know about birds? She has also led volunteer training sessions where she teaches volunteers how to listen to the kids and guide their curiosity.

"I always stress to the volunteers that the key to engaging kids is to ask questions. It's hard to get adults to ask instead of tell, but if you let the kids do most of the talking, that excites them and encourages other kids to fuel off of their answers," said Wendy. The answers are always surprising and delightful.

PHOTOS: Family birding field trip at Midewin National Tallgrass Prairie by Huan Song; Wendy Paulson by Patrick Williams; Bird drawings by students at Beard Elementary School

The BIMN program culminates in a field trip where students can take their experience of birding to an open natural area. Field trip sites include Big Marsh Park, Little Red Schoolhouse Nature Center, Montrose Point Bird Sanctuary, and many others.

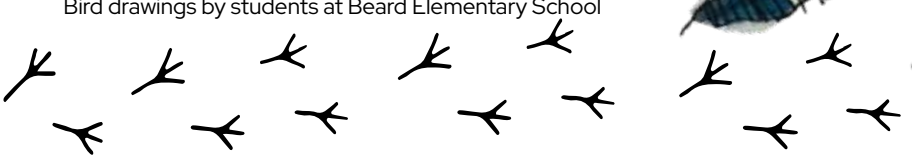
"The kids had a wonderful time and have been talking about it [the field trip] all day. I even had one student, who comes from a particularly challenging home environment, say his life had taken a turn for the better. When I asked why, one of the reasons was the field trip! That's what I call priceless," shared **Todd Winner**, a LEARN 6 Charter School teacher in the BIMN program.

Thanks to dedicated volunteers, teachers, and Openlands staff, Birds in My Neighborhood has served 60 schools and engaged 12,000 students in the past decade. With an average of 50–60 volunteers and educators trained each year, we aim to grow both groups to serve more students in the future.

Throughout Openlands' 60-year history, we have always believed that nature is a vital right and necessity for all. BIMN is one of Openlands' flagship education programs that creates opportunities for children to access, discover, and learn about nature. In 2018, the Birds in My Neighborhood program received the Wings Across the Americas—Urban Communities in Conservation Award from the U.S. Forest Service, a key partner and funder. In 2022, the program received the Craig Stettener Award for Environmental Education through the Chicago Bird Alliance, formerly the Chicago Audubon Society. Through programs like BIMN, Openlands strives to broaden children's understanding of nature and foster the next generation of environmental champions and stewards.



Wendy Paulson





What do you already know about birds?

What birds do you know?

PRE-K THROUGH 2ND-GRADE EARLY CHILDHOOD CLASSROOMS

Jessica Fong, the Director of Education at Openlands, spearheaded the inclusion of early childhood classrooms, ranging from Pre-K to 2nd grade, during the 2022-2023 school year. This expansion significantly grew the reach of the program from its previous focus on grades 3-5. Exposure to nature and birding at an early age contributes to children's academic achievement, mental health, and social-emotional well-being.

"I'm a Pre-K educator, and it was a joy to be back in the classroom with younger students and see their innate joy and curiosity about nature. At this age, they are learning about the world and how to be in the world," she said.

The enthusiastic response from early childhood educators underscores the success of this initiative, with over half of the participating classrooms now serving this age group. Halina Zielna from Beard Elementary School shared, "Teaching my young students about birds surprised me on so many levels. As an early childhood educator, I try to incorporate nature components into my curricular activities as often as possible. As we know, young children learn best when able to use all of their senses."

The BIMN program provides each student with a birding journal and each participating school with a shared birding kit that includes a bird guide, picture books, puppets, nests, and other interactive teaching tools. Teachers also get support to purchase additional materials for their classrooms.

"BIMN provided resources and materials for me to ignite an interest in the immediate environment around us," said Ms. Zielna. "This experience will never escape me and I will forever stay interested in birds and hope to pass that on to my students year after year."

Hey teachers! Applications for interested schools open in the fall of each school year. For more information and to join our newsletter to be notified when applications open go to: Openlands.org/birdschool

A FOCUS ON EQUITY

The Birds in My Neighborhood program demonstrates Openlands' commitment to access and equity. While all schools can apply for the program, recruitment efforts target schools on the South and West Sides, including

calls, emails, and teacher outreach. The majority of the participating schools are from historically underserved communities.

"Birds are the most readily available and accessible form of wilderness around us," said Jorge Garcia, Birds in My Neighborhood Volunteer Coordinator. "They are everywhere, and if you stand for just a few minutes, you are bound to see them even in highly urban environments." The BIMN program works in conjunction with other Openlands initiatives, such as Space to Grow and

TreePlanters Grant, to increase habitat for wildlife and birds in and around these schools. Field trips are an additional opportunity to help bring students and their families closer to nature. Openlands also partners with a local nonprofit called Wings and Talons to bring birds of prey like hawks and owls into classrooms as another nature touchpoint.

Recognizing the linguistic diversity in Chicago area schools, Openlands provides birding resources in Spanish, such as translated student journals. Schools that request these resources have a large percentage of bilingual students or English language learners. Openlands is especially seeking bilingual volunteers to join us and help facilitate birding experiences in Spanish and other languages.

Birds are the most readily available and accessible form of wilderness around us...if you stand for just a few minutes, you are bound to see them even in highly urban environments.

Jorge Garcia
Birds in My Neighborhood
Volunteer Coordinator

Want to share your love of nature with kids? Apply to be a volunteer! Birders of all levels are welcome to apply. Openlands.org/birdvolunteer

A MULTIGENERATIONAL LEARNING EXPERIENCE

In addition to nurturing a love of nature in children, the BIMN program is a gateway for adults to get outside and get curious. "To be a volunteer, you don't need to be a bird expert, although some are. Beginners are welcome, and we want people who are excited about engaging students," said Jorge. The process of volunteering creates opportunities where people can feel welcomed and comfortable with birding. "That, in turn, creates a multigenerational learning experience," he said.

Volunteers attend three training sessions that mirror the students' experiences. Outside of that formal training, volunteers can connect with the wider birding community through informal events and bird walks hosted by Openlands. Jorge said, "What we've seen is that our volunteers are engaging with the greater public, and they tend to take these opportunities and get out and bird."

OPENLANDS GRATEFULLY ACKNOWLEDGES THE FOLLOWING LEAD SUPPORT:



CROWN FAMILY PHILANTHROPIES



PHOTOS (clockwise from top left): Hayt Elementary School field trip to Montrose Harbor, Openlands; Northern Rough-winged Swallow, *Jorge Garcia*; Red-bellied Woodpecker, *Jorge Garcia*; BIMN volunteer Shawna Mertens at North Park Village Nature Center, *Eduardo Cornejo*; Lesser Scaup, *Jorge Garcia*; Jorge Garcia birding along the African American Heritage Water Trail, *Huan Song*; Beidler Elementary Kids with their bird journals; Hayt Elementary School neighborhood walk, *Lucia Whalen*; "What's my wingspan?" activity at Midewin National Tallgrass Prairie, *Huan Song*; Eggs spotted on a field trip to McKinley Park, *Patrick Williams*.

(below): Openlands Lakeshore Preserve, *Lucia Whalen*; (inset) An American Goldfinch at the Openlands Lakeshore Preserve, *Dave Carley*.



What do you want to know about birds?

This year, Openlands rolled out its first-ever teacher training in collaboration with the Peggy Notebaert Nature Museum. Participating teachers learn about bird biology, habitat, behavior, ID, and the logistics of the program. "We were intentional about helping teachers create community with each other so they can talk about what they do at their schools to engage their students with birds," said Jessica.

"I learn more every year. What I find most encouraging is how the enthusiasm spreads as people experience the program," shared **Kathleen Taylor**, a volunteer in the program. "One teacher gets involved and talks about the experience and other teachers want in. A child takes his workbook home or talks about what he did in the program and his parents and siblings get interested. And I am proof that the enthusiasm can also spread from volunteer to volunteer."

SUPPORTING BIRDS BEYOND THE CLASSROOM

Nestled along the Mississippi Flyaway, the Chicago region serves as a vital rest stop for migratory birds. Despite this, the city's skyline and lighting present formidable threats to numerous avian species, resulting in tragic collisions, particularly during migration season. A pivotal moment occurred in October 2023 when a significant mass migration event led to thousands of fatal collisions in a single night, underscoring the pressing need for ongoing bird advocacy and a stronger voice for them in the built environment. Openlands is committed to supporting policy initiatives at the city and federal levels so future major bird migration events can be a cause for celebration, not devastation. Openlands will continue collaboration with our conservation and governmental partners on implementing and strengthening the Lights Out Ordinance and upholding the Endangered Species Act. Civic engagement is paramount in mitigating these threats, as citizens play a pivotal role in advocating for bird-friendly infrastructure and policies. Initiatives such as BIMN are crucial in cultivating the next generation of civic leaders and environmental stewards who can speak on behalf of nature for years to come.

In addition to our advocacy efforts, Openlands protects and restores habitats critical to grassland birds across our region. Openlands and our partner, the Wetlands Initiative, recently received a historic \$1.5 million grant from the National Fish and Wildlife Foundation for habitat restoration at Midewin National Tallgrass Prairie. Grassland birds are among the most vulnerable populations of birds in the world, mostly due to habitat loss. Once completed, this project will transform an area the size of nearly 1,000 football fields into healthy prairie and wetlands, safeguarding habitat and creating more opportunities for birds and birders alike to thrive.

Openlands Lakeshore Preserve gifted to Lake County Forest Preserves

IN AUGUST 2023, Openlands completed the donation of the Openlands Lakeshore Preserve, transferring ownership of the 72-acre parcel to the Lake County Forest Preserves as an addition to the Fort Sheridan Forest Preserve. Openlands Lakeshore Preserve features 1 mile of Lake Michigan shoreline, three beautifully restored ravines and blufftops, accessible trails, overlooks, and art installations. This gifted property opened during Labor Day weekend and retains its name as the Openlands Lakeshore Preserve.

With the generous support of many donors, Openlands saved the land from private development and restored its unique natural areas, opening it in 2011. To date, the Preserve is one of the few publicly accessible ravine ecosystems in the Chicago region. Openlands' restoration work included the reintroduction of native plants, removal of invasive species, and installations to help prevent erosion.

Nearly 200 species of birds pass through the Great Lakes region and rely on migratory stopovers like the Preserve to rest and refuel.

The Fort Sheridan Forest Preserve at large contains ravine, prairie, savanna, lakeshore, and freshwater lake ecosystems. As one of the largest wooded areas remaining on the Illinois lakefront, the Preserve is a particularly critical habitat for migratory, breeding, and year-round birds. Nearly 200 species of birds pass through the Great Lakes region and rely on migratory stopovers like the Preserve to rest and refuel. In addition, 60 species of birds reside at the Preserve year-round. Restoration work along Lake Michigan and the Preserve pays tremendous dividends to wildlife, including songbirds, birds of prey, waterfowl and shorebirds, and warblers.

As part of the gift, Openlands also transferred approximately \$1.35 million for the continuation of the property's conservation and habitat restoration to the Preservation Foundation, the charitable partner of the Lake County Forest Preserves. The Preservation Foundation is obligated to use the funds to establish a long-term endowment to support ongoing ecological management of the 72-acre site.

Find the Pair Puzzle Answer Key: 7 and 12 are identical.

Openlands Annual Luncheon

celebrates 60 years of environmental impact with a vision towards the future



OPENLANDS HOSTED ITS ANNUAL LUNCHEON on October 17, 2023, to commemorate its 60th anniversary and pay tribute to the exceptional 35-year tenure of President and CEO, Jerry Adelman. The event, attended by nearly 1,000 influential individuals, including elected officials, community partners, and environmental leaders, celebrated the organization's accomplishments in the region and recognized Adelman with the 2023 Conservation Leadership Award. This luncheon raised nearly \$600,000, making it our most successful fundraising event to date.



During the luncheon, Openlands introduced Michael Davidson as the organization's next President and CEO. With over 25 years of experience in civic leadership, Davidson is well-equipped to guide Openlands as it continues its mission to safeguard and protect natural landscapes and green spaces in the Chicago region. Davidson assumed office in mid-November and Adelman was named President Emeritus of Openlands.

Openlands also unveiled the Nature for All campaign, the organization's most ambitious campaign to date to raise \$22 million towards protecting land, water, and wildlife. This initiative underlines the critical importance of the Chicago metropolitan area's abundant water and land resources for its economic, cultural, and ecological future. The campaign has raised \$20.5 million to date, and will continue until Earth Day 2024, solidifying Openlands' commitment to increase access to nature for people, for now, and for generations to come.

PHOTOS (clockwise from top right): Jerry Adelman walking up to the stage to receive the Conservation Leadership Award; Audience raising a glass to toast Jerry Adelman; Michael Davidson giving the opening welcome speech, Ashley Lane.

Learn more about the Nature for All campaign at Openlands.org/NFA

Welcome New Openlands Board Members

LAURA ROSENKRANZ is a former environmental lawyer from Mexico City, Mexico.



What brought you to Openlands? Caring for the land and the rights of people to enjoy it equitably are great passions of mine. After learning about the positive, impactful, and diverse work of Openlands, I wanted to do my part to support Openlands' mission.

Where is your favorite place to get outside in the region? Lake Michigan! It's amazing how different the sunrise can look throughout the year, but it's always so beautiful. I never get tired of looking at it.

CHRIS WU is a sustainability-focused impact investor at Impact Engine, where he's focused on supporting companies developing highly scalable solutions to the biggest social and environmental challenges.



What brought you to Openlands? I was originally trained as a civil and environmental engineer and have spent the majority of my career focused on the intersection between the natural and built environment. I love Openlands' mission and saw the opportunity to join the board as an exciting extension of the work I'm already doing as an impact investor.

Where is your favorite place to get outside in the region? Ryerson Woods Conservation Area in Riverwoods

OPENLANDER

A PUBLICATION OF OPENLANDS
VOLUME 28-Nº2, FALL/WINTER 2023

NON-PROFIT
US POSTAGE PAID
PERMIT Nº3589
CHICAGO, ILLINOIS
Address Correction
Requested



25 East Washington, Suite 1650
Chicago, Illinois 60602-1708
Telephone 312.863.6250
openlands.org



Find the pair of identical birds (answers inside!)



Openlands is a conservation leader in our region through education, land and water protection, habitat restoration, and advocacy.

Map key

- 1 **Glacial Park Conservation Area**
6705 State Rte 31, Ringwood, IL 60072
- 2 **Illinois Beach State Park**
1 Lake Front Dr, Zion, IL 60099
- 3 **Volo Bog State Natural Area**
28478 W Brandenburg Rd
Ingleside, IL 60041
- 4 **Rollins Savanna Forest Preserve**
20160 W Washington St
Grayslake, IL 60030
- 5 **Pleasant Valley Conservation Area**
13315 Pleasant Valley Rd
Woodstock, IL 60098
- 6 **Moraine Hills State Park**
1510 S River Rd
McHenry, IL 60051
- 7 **Brunner Family Forest Preserve**
18 N 681 Western Ave
Carpentersville, IL 60110
- 8 **Crabtree Nature Center**
3 Stover Rd, Barrington, IL 60010
- 9 **Ryerson Woods**
21950 Riverwoods Rd
Riverwoods, IL 60015
- 10 **Openlands Lakeshore Preserve**
24256 Patten Rd, Highwood, IL 60040
- 11 **Skokie Lagoons**
Tower Rd west of Forestway Dr,
Cook County, IL 60093
- 12 **Mallard Lake Forest Preserve**
Hanover Park, IL 60133
- 13 **Busse Woods**
E Higgins Rd/Rte 72, east of I-290/Hwy 53
Cook County, IL 60007
- 14 **Catherine Chevalier Woods**
N East River Rd, north of W Foster Ave
Chicago, IL 60656
- 15 **Bunker Hill North Flatwoods**
W Harts Rd, southwest of W Touhy Ave
Niles, IL 60714
- 16 **Thaddeus S. "Ted" Lechowicz Woods**
5901 N Central Ave, Chicago, IL 60646
- 17 **North Park Village Nature Center**
5801 N Pulaski Rd, Chicago, IL 60646
- 18 **West Ridge Nature Park**
5801 N Western Ave, Chicago, IL 60659
- 19 **LaBagh Woods**
N Cicero Ave, north of W Foster Ave
Chicago, IL 60630
- 20 **River Park**
5100 N Francisco Ave, Chicago, IL 60625
- 21 **Schiller Woods**
W Irving Park Rd, west of
N Cumberland Ave, Chicago, IL 60634
- 22 **Park No. 601 Dunning Read Natural Area**
4050 N Oak Park Ave, Chicago, IL 60634
- 23 **Horner Park**
2741 W Montrose, Chicago, IL 60618
- 24 **Lincoln Park—
Montrose Point Bird Sanctuary**
200 W Montrose Harbor Dr
Chicago, IL 60660
- 25 **Lincoln Park—
Bill Jarvis Migratory Bird Sanctuary**
2 W Belmont Harbor Dr
Chicago, IL 60657
- 26 **Riis Park**
6100 W Fullerton Ave, Chicago, IL 60639
- 27 **Humboldt Park**
1440 N Humboldt Blvd
Chicago, IL 60622
- 28 **Garfield Park**
300 N Central Park Ave
Chicago, IL 60624
- 29 **The Morton Arboretum**
4100 IL-53, Lisle, IL 60532
- 30 **Wolf Road Prairie**
2901 Park Ave, Westchester, IL 60154
- 31 **Columbus Park**
500 S Central Ave, Chicago, IL 60644
- 32 **Douglass Park**
1401 S Sacramento Dr, Chicago, IL 60623
- 33 **Northerly Island Park**
1521 S Linn White Dr, Chicago, IL 60605
- 34 **McKinley Park**
2210 W Pershing Rd, Chicago, IL 60609
- 35 **Sherman Park**
1301 W 52nd St, Chicago, IL 60609
- 36 **Whalon Lake**
Bolingbrook, IL 60565
- 37 **Waterfall Glen**
Cass School District 63,
Downers Grove Township, IL
- 38 **Little Red Schoolhouse Nature Center**
9800 Willow Springs Rd
Willow Springs, IL 60480
- 39 **Marquette Park (Chicago)**
6743 S Kedzie Ave, Chicago, IL 60629
- 40 **Dan Ryan Woods**
S Western Ave & W 87th St
Chicago, IL 60620
- 41 **Washington Park**
5531 S Martin Luther King Dr,
Chicago, IL 60615
- 42 **Jackson Park—Wooded Island**
6401 S Stony Island Ave
Chicago, IL 60637
- 43 **South Shore Nature Sanctuary**
7059 S South Shore Dr
Chicago, IL 60649
- 44 **Rainbow Beach Park**
3111 E 77th St, Chicago, IL 60649
- 45 **Steelworkers Park**
S Lake Shore Dr, E 87th St
Chicago, IL 60617
- 46 **Big Marsh Park**
11559 S Stony Island Ave
Chicago, IL 60617
- 47 **Eggers Grove**
11251 S Avenue E, Chicago, IL 60617
- 48 **Wolf Lake Memorial Park**
2324 Calumet Ave, Hammond, IN 46320
- 49 **Beaubien Woods**
W Doty Ave S, southeast of E 130th St &
S Ellis Ave, Chicago, IL 60633
- 50 **Hegewisch Marsh Park**
13000 S Torrence Ave, Chicago, IL 60633
- 51 **Sand Ridge Nature Center**
15891 Paxton Ave
South Holland, IL 60473
- 52 **Lake Renwick Preserve and
Heron Rookery**
Plainfield, IL 60544
- 53 **Orland Grassland**
167th St & S LaGrange Rd
Tinley Park, IL 60487
- 54 **Bartel Grassland
Land and Water Reserve**
Central Ave & Flossmoor Rd
Tinley Park, IL 60477
- 55 **Highland Heron Rookery**
3, 41°33'36. 87°26'28, W 7th Ave
Highland, IN 46402
- 56 **Marquette Park (Indiana)**
1 N Grand Blvd, Gary, IN 46403
- 57 **Indiana Dunes State Park**
1600 N 25 E, Chesterton, IN 46304
- 58 **Des Plaines State Fish and Wildlife Area**
24621 N River Rd, Wilmington, IL 60481
- 59 **Midewin National Tallgrass Prairie**
IL-53, Wilmington, IL 60481
- 60 **Monee Reservoir**
27341S Ridgeland Ave, Monee, IL 60449



openlands
conserving nature for life



Openlands Guide to Birdwatching

GETTING STARTED

Embarking on a birding adventure is a rewarding journey into the natural world, and Openlands is here to guide you through the wonders of birdwatching in our region. To start, all you need is your eyes, ears and a little curiosity—let your interest in our avian friends be your compass. For a closer look, consider getting some binoculars to help you see clearly. Supplement your exploration with guides or apps made by Sibley, Cornell, and Merlin for real-time identification and bird facts.

TIMING FOR BIRDING SUCCESS

Timing is a key consideration for birders. The fall and spring migration seasons are prime opportunities to witness a kaleidoscope of winged travelers. Some birds, like the majestic Sandhill Cranes, make special appearances in December. Others like Dark-eyed Juncos or Black-capped Chickadees, may be year-round residents of our region. Generally, dawn is the best time to catch the chorus—when many birds start off their day with collective bird songs. If you are looking for specific nocturnal species like owls, birding at night will yield more success.

RESPECTING NATURE AND FELLOW BIRDERS

Respecting nature and fellow birders is paramount. Maintain a quiet demeanor, stay on designated paths in parks, and resist the temptation to touch nests, eggs, or birds. Familiarize yourself with the American Birding Association's Code of Birding Ethics. Respect the interests and rights of other birders who are sharing this outdoor experience. Take special care for sensitive or threatened species by avoiding the disclosure of precise locations to prevent future disturbances.

SPOTTING BIRDS IN OUR REGION

The Chicago region is a bustling haven for a variety of common birds, each contributing to the vibrant tapestry of our urban wildlife. Among the regular avian residents are ubiquitous species such as robins, cardinals, and sparrows, which thrive in diverse landscapes throughout the city. However, noteworthy sightings add a special touch to the birding experience here. The Lincoln Park Zoo has an established wintering site for the Black-crowned Night Heron, a bird on Illinois' state endangered list. Additionally, birdwatchers can keep an eye out for the Great Lakes Piping Plovers, a federally endangered species now with 70 nesting pairs at Montrose Beach. These notable birds showcase the resilience and adaptability of wildlife but also offer birders special moments of connection with nature right in the heart of an urban environment.

Becoming an advocate for nature with curiosity, and birding serves as the perfect entry point. Birding is one of the most accessible and fun ways to get outside and connect with nature. Regardless of age, birdwatching provides a wondrous experience, reducing stress and enhancing well-being. You don't need to venture far; the joy of birding can be found when you fully tap into your senses and immerse yourself in your surroundings. This Get Outside Map guides novice and advanced birders alike to prime birdwatching spots in our region. From shorelines to wetlands, from prairies to neighborhood parks, birds are all around us!

IDENTIFYING DIFFERENT BIRD SPECIES

Identifying birds involves honing in on the distinct characteristics of each species and often even by the age and gender of the bird. Color is one of the most apparent features, especially in many adult male birds. Size is another easy clue. Paying attention to beak shape provides crucial information about a bird's diet and behavior, ranging from the pointed bills of insect-eaters to the sturdy bills of seed-eating birds. Observing wing tips during flight is another useful marker, with characteristics like wing shape and length aiding in species differentiation. Flight patterns contribute to identification, as some birds soar gracefully while others exhibit erratic movements. Sound is a powerful tool; each species has its own unique songs, and a tool like the Merlin app can help with bird ID through sound. Lastly, take note of the habitat where a bird is spotted, as different species prefer environments such as tree tops, shrubs, or bodies of water.

BIRDING WITH KIDS

Introducing kids to birding is a process of fostering curiosity. Encourage them to spot clues in the landscape—boundary edges between landscapes, waterways, and wooded areas are treasure troves. Acknowledge signs of birds beyond sightings, such as nests or footprints, and teach patience to manage any moments of frustration. To build confidence and foster interest, start by identifying larger birds like geese or ducks that are easily visible in parks or near bodies of water. The vibrant red plumage of cardinals or the bright blue of Blue Jays make them some of the best introductory species, capturing a child's attention with their striking colors. These larger and more vivid birds can serve as stepping stones, gradually paving the way for exploring the diverse world of bird species.

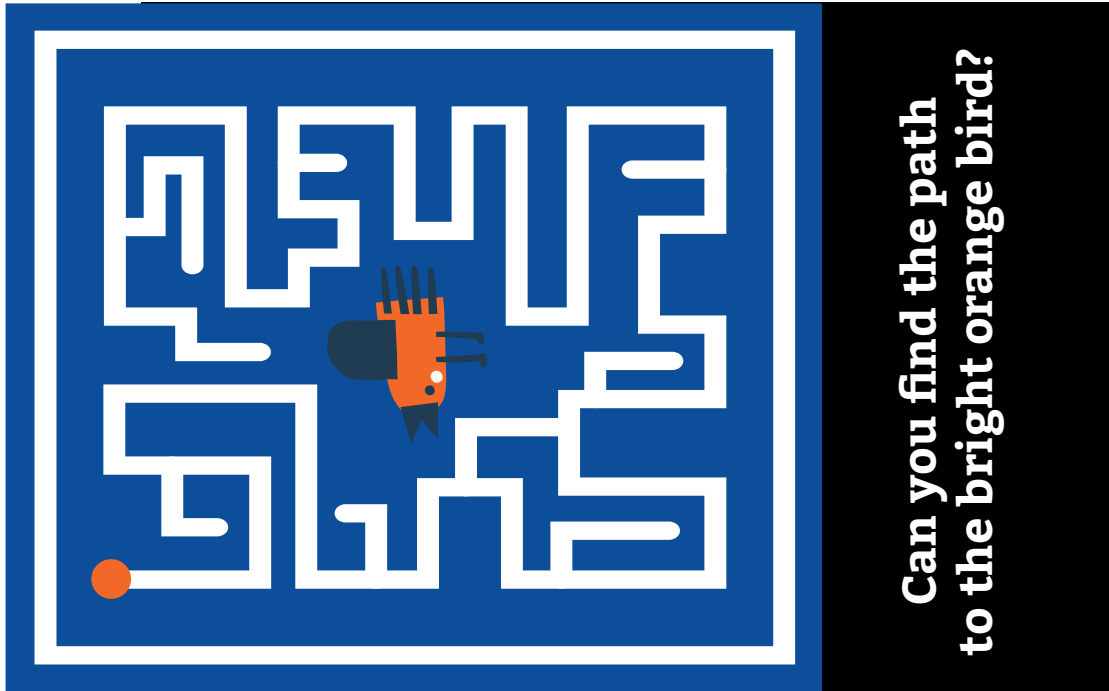
MEETING FELLOW BIRDERS

For those eager to connect with fellow birders, our region offers a range of special interest groups like BIPOC Birders and the Feminist Birding Club, among many others. Participate, or host bird walks at local parks or nature preserves to share your passion and knowledge. Consider becoming a Birds in My Neighborhood volunteer and bringing the joys of birding to local schools to foster a new generation of nature champions.

Learn more about volunteering at: [Openlands.org/birdvolunteer](https://openlands.org/birdvolunteer)

Answer Key: 1-C, 2-F, 3-G, 4-B, 5-E, 6-A, 7-D

Take this with you on a birding adventure!



Can you find the reflection of each sparrow in the water?

